



Tool Kit for Equity & Justice in Local Climate Action Planning

Wisconsin Climate Table: Community Commitments Campaign

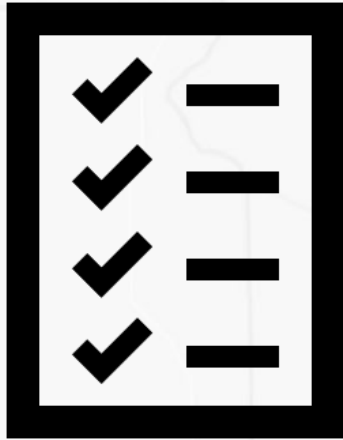
Stephanie Robinson, AICP 350 Wisconsin

Susan Gaeddert, 1000 Friends of Wisconsin, Wisconsin Climate Table Coordinator

Keveia Guiden, Wisconsin Climate Table Project Coordinator



Introduction



- Wisconsin Climate Table–Community Commitments Campaign
- Tool Kit for Equity in Climate Action Planning
- Stories of Energy Burden and Climate Impact
- Feedback & next steps

Wisconsin Climate Table

WHAT WE ARE

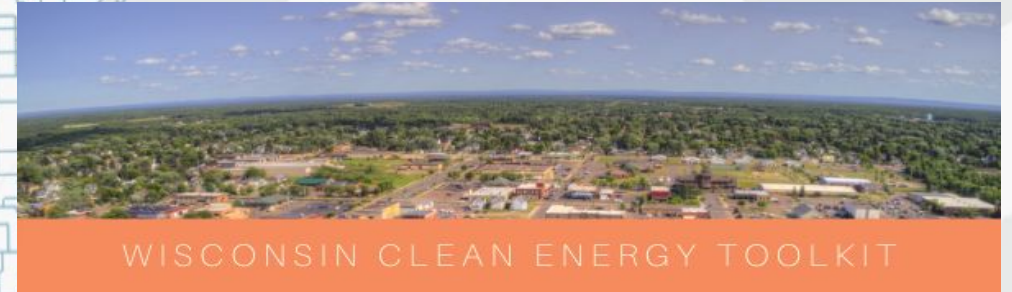
- Network of nearly 40 organizations in Wisconsin
- North star goal of equitably eliminating GHG emissions by 2050
- Currently funded with a grant from the RE-AMP Network (reamp.org)

WHO WE ARE

- Organizations with expertise in renewable energy, environmental justice, interfaith organizing, grassroots organizing, public health, climate policy, and more
- Internal-facing organization

HOW WE WORK

- Strategic collaboration & collective knowledge
- Share resources & amplify strategies
- Develop tools & reports



Community Commitments Campaign (CCC)

Formed to support localities passing climate resolutions



Released Local Government Clean Energy Tool Kit



Hired Keviea Guiden to do grassroots organizing in MKE/SE Wisconsin



2022-2023

Developed tool kit for equity in local climate action planning

Uplifted role of local governments in Gov's Climate Change Task Force



Tool Kit for Equity & Justice in Climate Action Planning

WCT CCC members involved in Tool Kit development

1000 Friends of Wisconsin

350 Wisconsin

Citizen Action of Wisconsin

Clean Wisconsin

Elevate

RENEW Wisconsin

Waukesha County Green Team

Wisconsin Health Professionals for Climate Action



WISCONSIN LOCAL GOVERNMENT
CLIMATE COALITION

Wisconsin Local Government Climate Coalition (WLGCC)

Dane County, City of La Crosse, City of Sun Prairie gave us feedback on the tool as well.

What is the purpose of the tool kit?

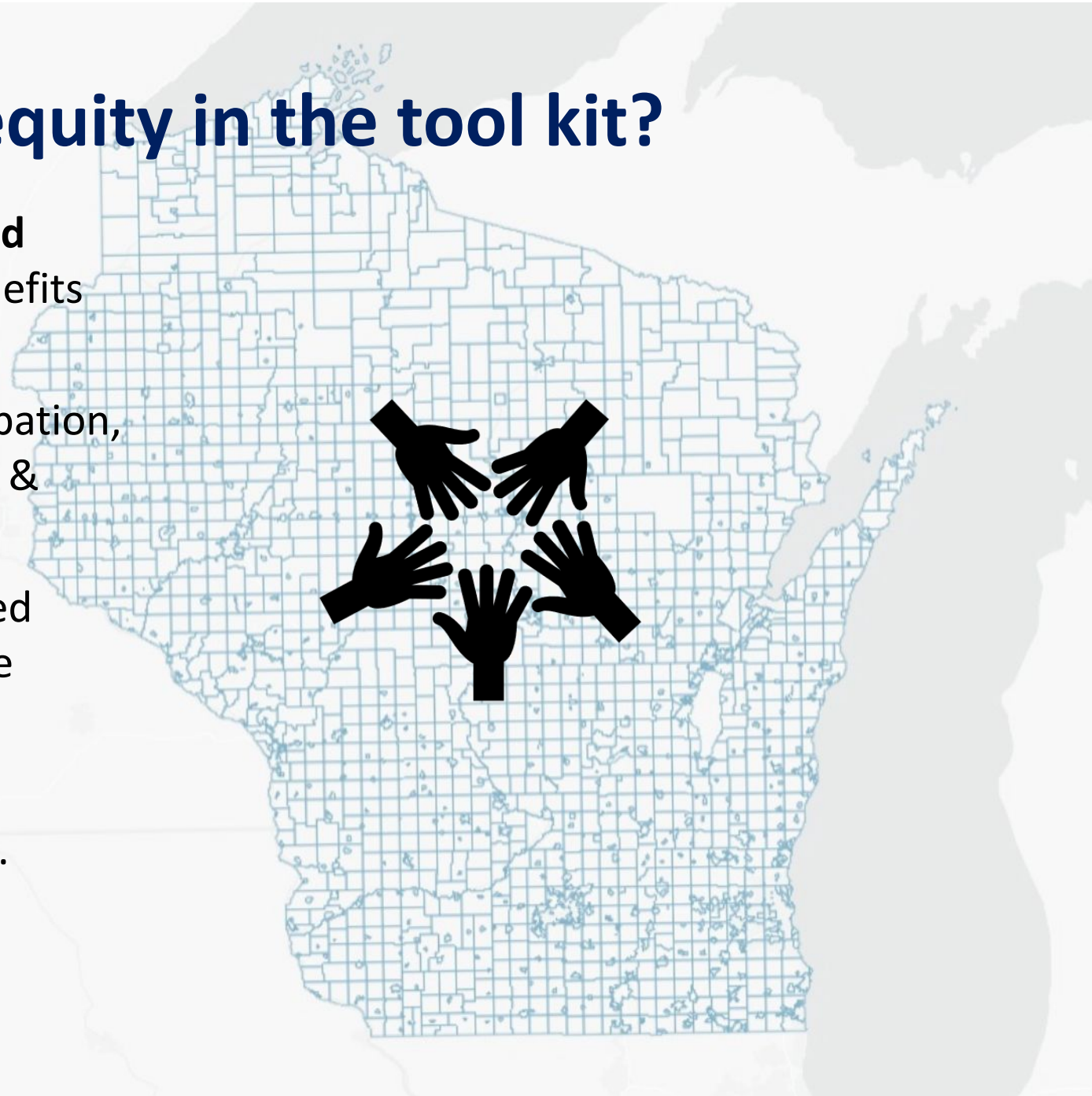


The Tool Kit is a Wisconsin-specific guide to braiding equity into climate policies, plans, and programs at the local level. It is intended for municipal staff, policy makers, and advocates.

- **Ensure equity is a focal point** of local climate planning regardless of size, demographics, geography or resources.
- **Support communities** at all stages of climate readiness.
- **Create a Community of Practice** for Wisconsin municipalities around equitable climate planning.
- **Prepare for funding** opportunities (IIJA/IRA).
- **Create a living tool** that will continue to feature the good work of Wisconsin's communities.

How did we approach equity in the tool kit?

- **Prioritize historically marginalized and frontline communities:** maximize benefits and minimize further harms.
- **Use a broad lens:** processes & participation, distribution of benefits, and historical & structural barriers.
- **Address intersectionality:** marginalized communities often experience climate impacts in multiple ways that are compounded.
- **Connect** lived experiences with policy.



Milwaukee Climate & Equity Plan



JOIN US!

Tomorrow
Wednesday, June 14th

Media Conference
 8:30am

Public Hearing
 9:00am

Milwaukee City Hall
 200 E Wells St.

**NORTH SIDE RISING
 CITIZEN
 ACTION
 OF WISCONSIN**

Your voice is needed!

Support Milwaukee's Climate and Equity Plan!

The Plan is up for a vote by the Common Council. Let elected officials know you support this plan to make our city a more equitable and resilient place to live - for everyone.

Now: Email the Common Council

- Send your comments to the Office of the City Clerk: clcc@milwaukee.gov. Include your name and address

June 14: Show up at the Finance Committee meeting

301-B
 - we have signs!

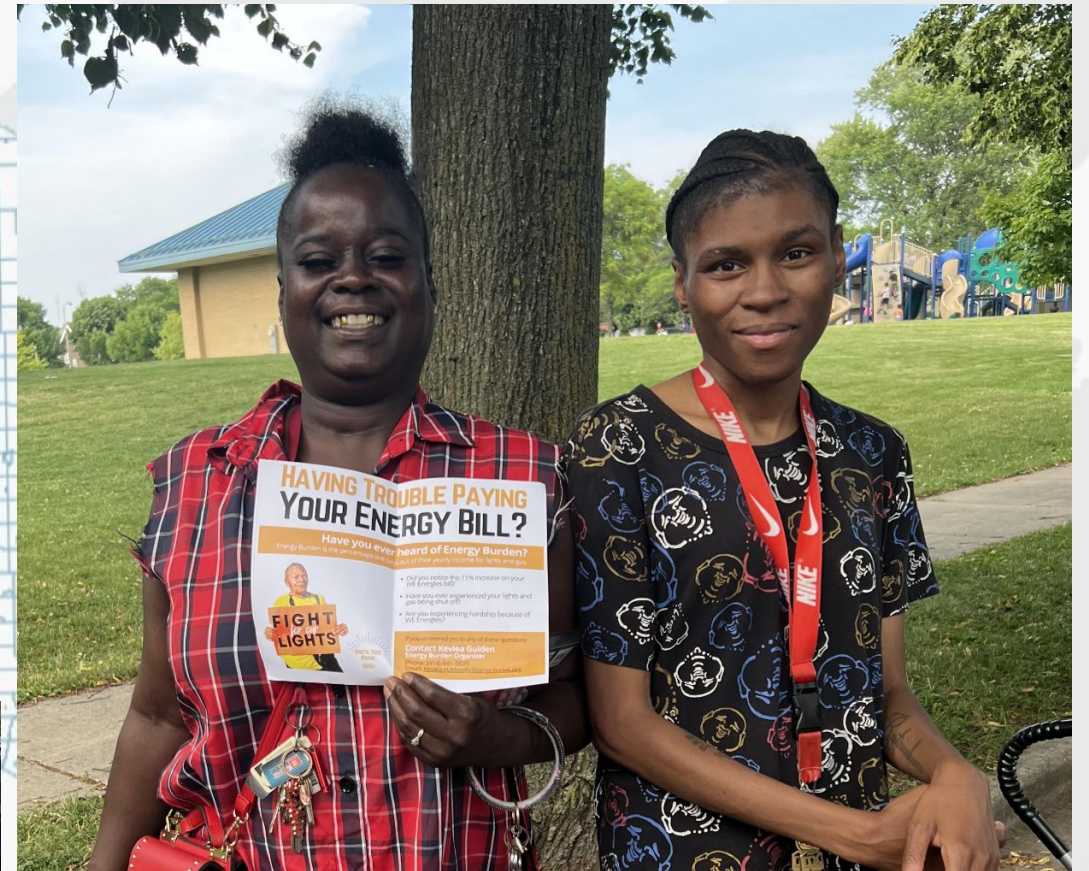
h Council meeting
 cil Chambers
 e have signs!

WUY



Energy burden & climate impacts in SE Wisconsin: Connecting lived experience with climate change





Tool Kit: Next Steps

- Collecting feedback
- Connecting with collaborators to share the Tool Kit broadly
- Adding resources for grassroots advocates
- Collecting more impact stories from many communities in urban and rural areas
- Building a storymap to share stories of impact and resilience statewide

What we need from you!

Fill out the feedback survey: <https://forms.gle/5dCXrrAErtNwu3g76>

Tell us what additional resources you'd like to see in the Tool Kit.

Share your equitable climate plan, resolution, or program.

Bring us stories of impact from your community!

Bring us your community's climate and equity success stories!

Contact the WCT Coordinator at susan@1kfriends.org

<https://wisconsinclimatetable.org>

<https://wisconsinclimatetable.org/equity-in-climate-action-planning-tool-kit/>

